

Top Drawer

BY KATHY HALL



Botanicals

Quilt Design: Heidi Pridemore

Quilt Size: 66" x 90"

andoverfabrics.com

andover • makower.uk

Free Pattern Download Available

1384 Broadway New York, NY 10018

Tel. (800) 223-5678 • andoverfabrics.com

Botanicals



Featuring Andover Fabrics new Collection: Top Drawer by Kathy Hall
Quilt designed by Heidi Pridemore of The Whimsical Workshop

Quilt finished 66" x 90"

Cutting Directions

Note: Read assembly directions before cutting patches. Borders are cut to exact length required plus $\frac{1}{4}$ " seam allowance. WOF designates the width of fabric from selvedge to selvedge (approximately 42" wide).

Fabric A Cut (4) $6\frac{1}{2}$ " x WOF strips. Sew the strips together end to end with diagonal seams and cut (2) $6\frac{1}{2}$ " x $78\frac{1}{2}$ " strips.
Cut (4) $6\frac{1}{2}$ " x WOF strips. Sew the strips together end to end with diagonal seams and cut (2) $6\frac{1}{2}$ " x $66\frac{1}{2}$ " strips.

Fabric B Cut (4) $2\frac{1}{2}$ " x WOF strips. Sew the strips together end to end with diagonal seams and cut (2) $2\frac{1}{2}$ " x $74\frac{1}{2}$ " strips.
Cut (3) $2\frac{1}{2}$ " x WOF strips. Sew the strips together end to end with diagonal seams and cut (2) $2\frac{1}{2}$ " x $54\frac{1}{2}$ " strips.

Fabric C Cut (4) $1\frac{1}{2}$ " x WOF strips. Sew the strips together end to end with diagonal seams and cut (2) $1\frac{1}{2}$ " x $72\frac{1}{2}$ " strips.
Cut (3) $1\frac{1}{2}$ " x WOF strips. Sew the strips together end to end with diagonal seams and cut (2) $1\frac{1}{2}$ " x $50\frac{1}{2}$ " strips.

Fabric D Cut (24) $4\frac{7}{8}$ " squares. Cut each square across one diagonal to make (48) large triangles.

Fabric E Cut (6) $4\frac{1}{2}$ " x WOF strips. Sub-cut the strips into (48) $4\frac{1}{2}$ " squares.

Fabric F Cut (144) $2\frac{7}{8}$ " squares. Cut each square across one diagonal to make (288) small triangles.

Fabric Requirements

| | | Yardage | Fabric |
|-----------------|------------------------|-----------------------|---------|
| Fabric A | outer border | 1 $\frac{5}{8}$ yards | 8890-C |
| Fabric B | middle border | $\frac{2}{3}$ yard | 8892-C |
| Fabric C | inner border | $\frac{3}{8}$ yard | 8895-E |
| Fabric D | blocks | $\frac{5}{8}$ yard | 8890-B |
| Fabric E | blocks | $\frac{7}{8}$ yard | 8891-B |
| Fabric F | block | 1 $\frac{1}{8}$ yards | 1867-WW |
| Fabric G | blocks, binding | 1 $\frac{1}{4}$ yards | 8893-B |
| Fabric H | blocks | $\frac{5}{8}$ yard | 8891-E |
| Fabric I | blocks | 1 yard | 8897-B |
| Backing | Backing | 5 $\frac{1}{2}$ yards | 8891-C |

Fabric G Cut (9) $2\frac{1}{2}$ " x WOF strips. Sub-cut the strips into (144) $2\frac{1}{2}$ " squares.
Cut (8) $2\frac{1}{2}$ " x WOF strips for the binding.

Fabric H Cut (3) $4\frac{1}{2}$ " x WOF strips. Sub-cut the strips into (24) $4\frac{1}{2}$ " squares.

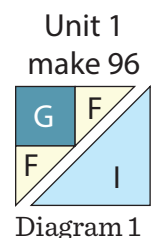
Fabric I Cut (48) $4\frac{7}{8}$ " squares. Cut each square across one diagonal to make (96) large triangles.

Backing Cut (2) 98" x WOF strips. Sew the strips together and trim to make (1) 74" x 98" backing.

Making the Quilt

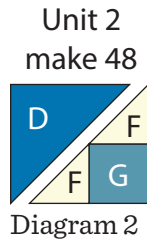
1. Block Assembly

Sew (1) Fabric F small triangle to the bottom of (1) $2\frac{1}{2}$ " Fabric G square. Pay attention to the orientation of the Fabric F triangle. Sew (1) Fabric F small triangle to the right side of the Fabric G square to make (1) FGF triangle. Pay attention to the orientation of the Fabric F triangle. Sew the FGF triangle to (1) Fabric I large triangle, long sides together, to make (1) Unit 1 square (Diagram 1). Repeat to make (96) Unit 1 squares total.



Botanicals

2. Sew (1) Fabric F small triangle to the top of (1) 2 1/2" Fabric G square. Pay attention to the orientation of the Fabric F triangle. Sew (1) Fabric F small triangle to the left side of the Fabric G square to make (1) FGF triangle. Pay attention to the orientation of the Fabric F triangle. Sew the FGF triangle to (1) Fabric D large triangle, long sides together, to make (1) Unit 2 square (Diagram 2). Repeat to make (48) Unit 2 squares total.



3. Sew together (1) Unit 2 square, (1) Unit 1 square and (1) 4 1/2" Fabric E square to make the top block row. Pay attention to the unit orientations. Sew (1) Unit 1 square to each side of (1) 4 1/2" Fabric H square to make the middle block row. Pay attention to the unit orientations. Sew together (1) 4 1/2" Fabric E square, (1) Unit 1 square and (1) Unit 2 square to make the bottom block row. Pay attention to the unit orientations. Sew the (3) rows together to make (1) Block One square (Diagram 3). Repeat to make (12) Block One squares total.
4. Sew together (1) 4 1/2" Fabric E, (1) Unit 1 square and (1) Unit 2 square to make the top block row. Pay attention to the unit orientations. Sew (1) Unit 1 square to each side of (1) 4 1/2" Fabric H square to make the middle block row. Pay attention to the unit orientations. Sew together (1) Unit 2 square, (1) Unit 1 square and (1) 4 1/2" Fabric E square to make the bottom block row. Pay attention to the unit orientations. Sew the (3) rows together to make (1) Block Two square (Diagram 4). Repeat to make (12) Block Two squares total.

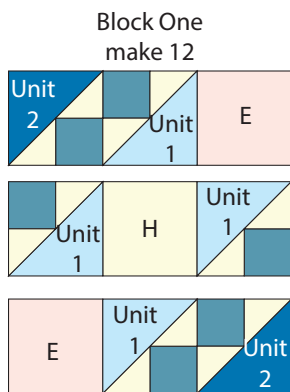


Diagram 3

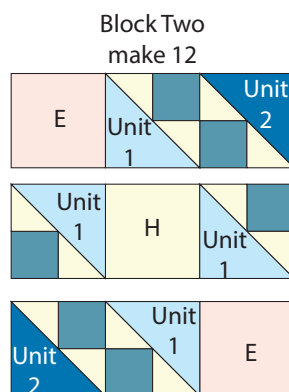


Diagram 4

Quilt Top Assembly

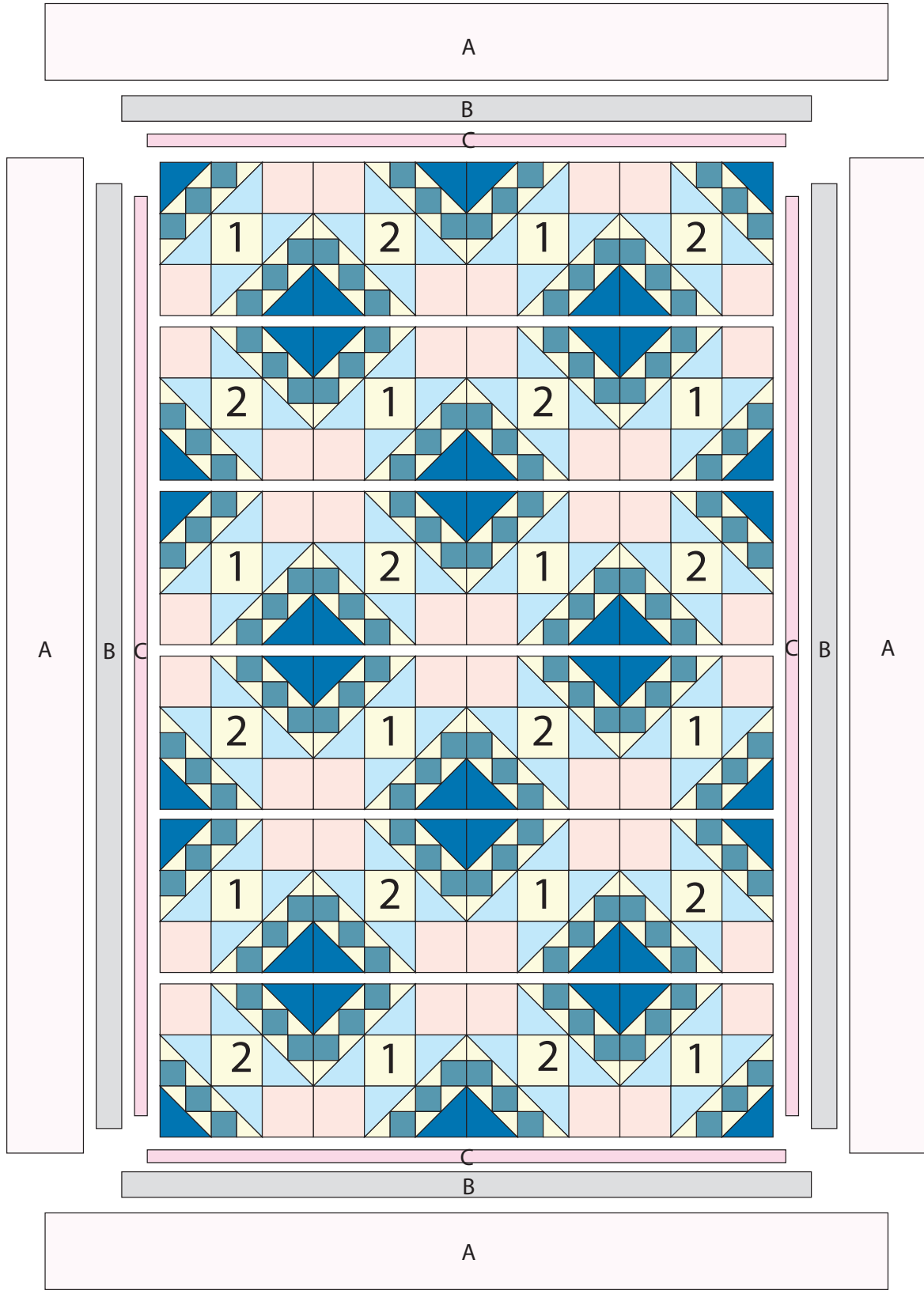
(Refer to the Quilt Layout when assembling the quilt top.)

5. Sew together (2) Block One squares and (2) Block Two squares, alternating them, to make Row One. Pay attention to the block orientations. Repeat to make Row Three and Row Five.
6. Sew together (2) Block Two squares and (2) Block One squares, alternating them, to make Row Two. Pay attention to the block orientations. Repeat to make Row Four and Row Six.
7. Sew together the rows, in numerical order, to make the Center Block.
8. Sew (1) 1 1/2" x 72 1/2" Fabric C strip to each side of the Center Block. Sew (1) 1 1/2" x 50 1/2" Fabric C strip to the top and to the bottom of the Center Block.
9. Sew (1) 2 1/2" x 74 1/2" Fabric B strip to each side of the Center Block. Sew (1) 2 1/2" x 54 1/2" Fabric B strip to the top and to the bottom of the Center Block.
10. Sew (1) 6 1/2" x 78 1/2" Fabric A strip to each side of the Center Block. Sew (1) 6 1/2" x 66 1/2" Fabric A strip to the top and to the bottom of the Center Block to make the quilt top.

Finishing the Quilt

11. Layer and quilt as desired.
12. Sew the (8) 2 1/2" x WOF Fabric G strips together, end to end with a 45-degree seams, to make the binding. Fold this long strip in half lengthwise with wrong sides together and press.
13. Bind as desired.

Botanicals



Quilt Layout

Top Drawer

BY KATHY HALL



8890-B



8890-C



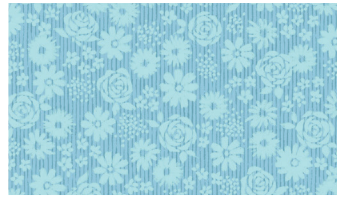
8891-B



8891-C



8891-E



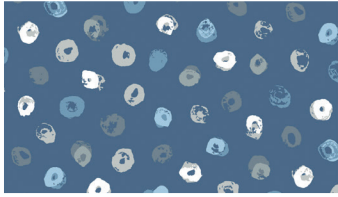
8892-B



8892-C



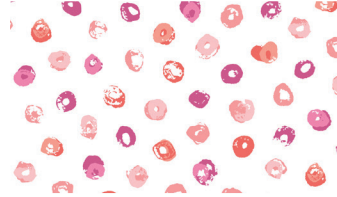
8892-E



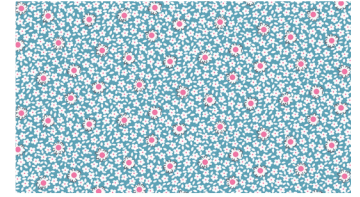
8893-B



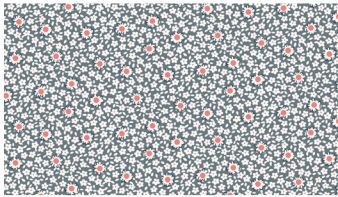
8893-C



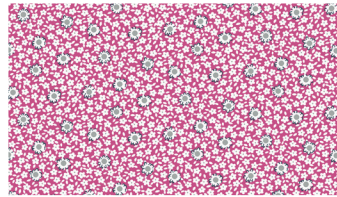
8893-E



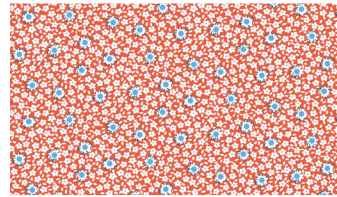
8894-B



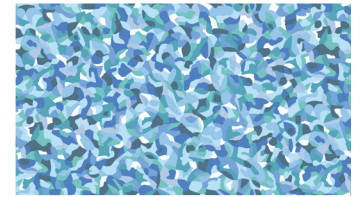
8894-C



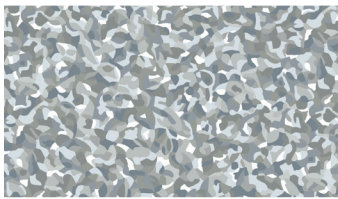
8894-E



8894-O



8895-B



8895-C



8895-E



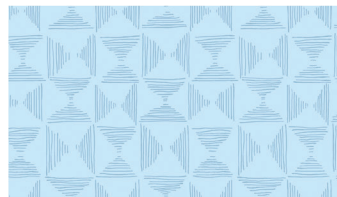
8896-B



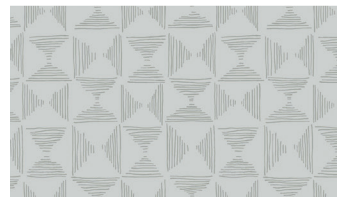
8896-E



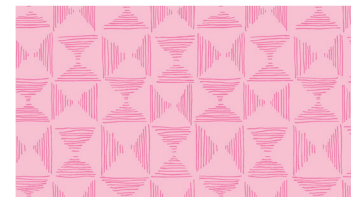
8896-O



8897-B



8897-C



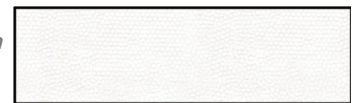
8897-E

About Our Fabrics

A recognized leader in the quilting industry, Andover Fabrics features designs by a wide variety of talented artists and licenses, including Downton Abbey and Eric Carle's Very Hungry Caterpillar. Catering to the tastes of creative and dedicated quilters, Andover has a style for everyone — authentic reproductions, romantic florals, modern and more.

*Blend with fabrics from
Dimples by Andover Fabrics*

Fabrics shown are 25% of actual size.



1867-WW

andover • makower.uk

Free Pattern Download Available

1384 Broadway New York, NY 10018
Tel. (800) 223-5678 • andoverfabrics.com